

Catalog

With pricing in Euro incl. 19% VAT

Status: January 2015



Index

Lambda-Messwandler V4.0	2
Wideband-Lambda Controller for 12Volt Supply	4
Wideband-Lambda Controller for 24Volt Supply	6
Accessories	8
Lambdaprobe LSU4.2	9
Lambdaprobe LSU4.9	10
Connector for LSU4.2:	11
Connector for LSU4.9:	12
Welding thread for Lambdaprobes	13
Mounting rail adapter (DIN rail adapter)	14
Ordering and shipping	15
Shipping costs	15
Payment	15

Lambda-Messwandler V4.0

Wideband-Lambda Controller V4.0

The Wideband Lambda-Controller in Version 4.0 is available in different versions:

- Operating Voltage 12 Volts (e.g. for automotive use cases)
- Operating Voltage 24 Volts (e.g. for usage with PLC)

The new version V4.0 has many advantages against comparable products. It doesn't use the proven Bosch technology for the Lambda-Probes only. Even for Lambda-Value analysis the Bosch technology is used.

Bosch Lambda-technology is used in millions of applications and very reliable.

Besides the reliable analysis and control the Wideband Lambda-Controller offers a multiplicity of diagnosis functions.

What is the Wideband Lambda-Controller able to?

- Robust technology for applications in 12 Volt automotive applications or with 24 Volt in industrial environment.
- Compatibility to Lambda-Probes Bosch LSU4.2 and LSU4.9. LSU ADV is available soon.
- Two analog outputs with voltage range of 0-5 Volts. First to output a linearized Lambda-Value, the second to emulate a narrow band Lambda-Probe.
- In 24 Volt version additionally a 0-10 Volt and a 4-20mA output is available

Sebastian Knödler Technologie, Rosenstraße 25, D-71549 Auenwald
info@breitband-lambda.de
Tel.: +49 (0)7191 - 933 97 91 / Fax: +49 (0)7191 - 933 97 92

- Various output characteristics are available:
 - λ 0,7 ... 1,3
 - λ 1,0 ... 10,0
 - AFR 10 ... 20
 - Oxygen content 0 ... 21%
 - Customer characteristics on request
- One digital RS232 interface for diagnosis and data logging.
- The Lambda-Messwandler is a product which is 100% “Made-In-Germany”. Naturally a detailed manual in German and English language is available. A bi-lingual support is offered.
- All legitimate standards are fulfilled, e.g. RoHS, CE, WEEE, VerpackV and warranty.

Bank: Kreissparkasse Waiblingen **BLZ:** 602 500 10 **Konto:** 100 118 3482
BIC: SOLADES1WBN **IBAN:** DE40602500101001183482
VAT-ID: DE 285920322 **WEEE:** DE 97471003

Wideband-Lambda Controller for 12Volt Supply

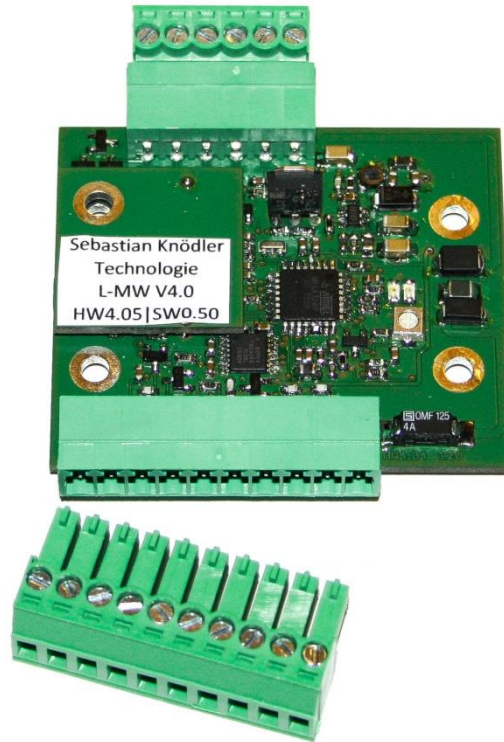


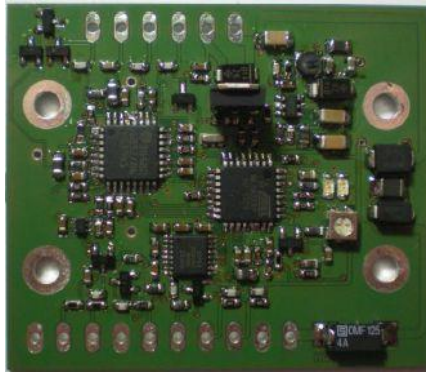
Abb. 1: L-MW V4.0 12V S

Included in delivery:

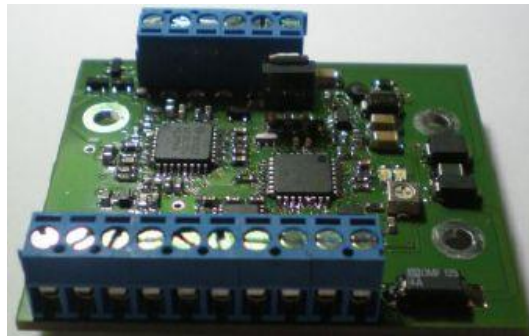
- Wideband-Lambda Controller for usage with 12 Volt supply (11 - 16 Volt)
- Two analog 0-5V outputs for linearized Lambda-Value and narrow-band probe emulation
- One output for Error-Signaling
- One input to start the measurement (allowed Voltage min. 5V, max. 30V)
- Digital RS232-Interface for diagnosis and data logging
- Dimensions (Length x Width x Height):
 - Basic and simple clamps version: 54mm x 45mm x 12mm
 - Pluggable clamps version: 54mm x 73mm x 13mm

Versions:

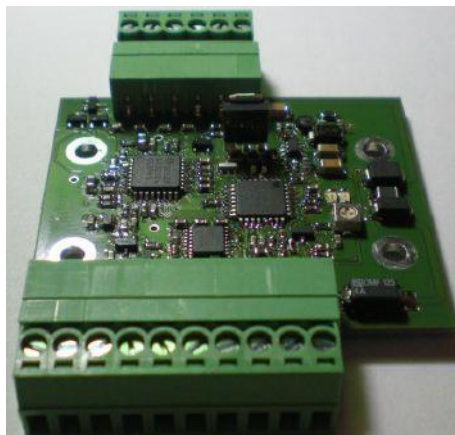
- Basic version with solder pads (Order.-No.: L-MW V4.0 12V B)
Price incl. VAT: **75.00 Euro**



- Simple clamps version (Order.-No.: L-MW V4.0 12V E)
Price incl. VAT: **80.00 Euro**



- Pluggable clamps version (Order.-No.: L-MW V4.0 12V S)
Price incl. VAT: **85.00 Euro**



Wideband-Lambda Controller for 24Volt Supply

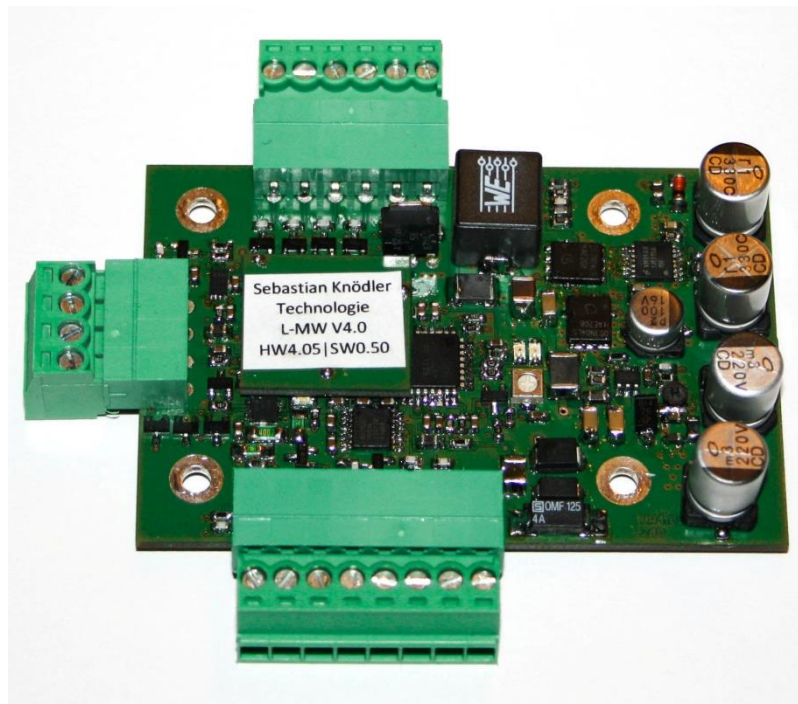


Abb. 2: L-MW V4.0 24V S

Included in delivery:

- Wideband-Lambda Controller for usage with 24 Volt supply (22 - 28 Volt)
- Two analog 0-5V outputs for linearized Lambda-Value and narrow-band probe emulation
- One analog output 0-10V and one analog output 4-20mA for linearized Lambda-Value
- One output for Error-Signaling (5V, 24V or open collector)
- One input to start the measurement (allowed Voltage min. 5V, max. 30V)
- Digital RS232-Interface for diagnosis and data logging
- Dimensions (Length x Width x Height):
 - Simple clamps version: 72mm x 48mm x 12mm
 - Pluggable clamps version: 85mm x 75mm x 17mm

Sebastian Knödler Technologie, Rosenstraße 25, D-71549 Auenwald
info@breitband-lambda.de
Tel.: +49 (0)7191 - 933 97 91 / Fax: +49 (0)7191 - 933 97 92

Versions:

- Simple clamp version with solder pads (Order.-No.: L-MW V4.0 24V E)
Price incl. VAT: **125.00 Euro**
- Pluggable clamp version with solder pads (Order.-No.: L-MW V4.0 24V S)
Price incl. VAT: **135.00 Euro**

Bank: Kreissparkasse Waiblingen **BLZ:** 602 500 10 **Konto:** 100 118 3482
BIC: SOLADES1WBN **IBAN:** DE40602500101001183482
VAT-ID: DE 285920322 **WEEE:** DE 97471003

Accessories

The Wideband-Lambda Controller is working as well as with Lambdaprobes of the type Bosch LSU4.2 and LSU4.9.

The probes of type **LSU4.2** are one of the first generations of Widebandprobes. As a measurement reference the surrounding air is used. Attention has to be paid that there are no exhaust gasses or fuel fumes are released in the probes area.

The probes of type **LSU4.9** are a newer generation and using an pumped reference cell. This makes the probe independent from the surrounding air and can be used in polluted air too.

For using this probe two solder jumpers have to be moved and the firmware of the controller has to be configured via the RS232 digital interface.

Of course we can do this configuration for you for free.

Please note: The Lambdaprobes are factory calibrated from Bosch. The calibration data is saved in form of a trimming resistor integrated into the probes plug. This resistor is specific for each Lambdaprobe and can be seen as the probes fingerprint. For this reason the **original plug** of the probe has to be used.

Matching connectors are sold here too.

Lambdaprobe LSU4.2



Abb. 3: LSU4.2

Included in delivery:

- Bosch Wideband Lambdaprobe type LSU4.2 part number 0 258 007 057 (or comparable)
- Cable length: 0.6m
- Delivery in original packaging with plastic protecting cap

Order-No.: LSU4.2

Price incl. VAT: **75.00 Euro**

Lambdaprobe LSU4.9



Abb. 4: LSU4.9

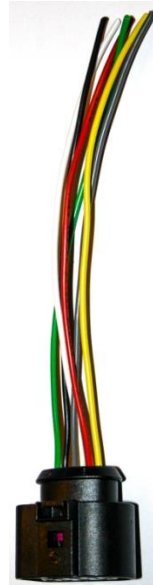
Included in delivery:

- Bosch Wideband Lambdaprobe type LSU4.9 part number 0 258 017 025 (or comparable)
- Cable length: 0.85m
- Delivery in original packaging with plastic protecting cap

Order-No.: LSU4.9

Price incl. VAT: **90.00 Euro**

Connector for LSU4.2:



Included in delivery:

- Matching connector for Bosch Wideband Lambdaprobe type LSU4.2
- Housing, contacts and single cable sealing
- For cable width 1.0 - 1.5mm² (AWG 16)
- Delivery with or without pre-assembled cables (cable color matching for Lambdaprobe)

Versions:

- Version without pre-assembled cables (Order.-No.: ST-4.2-O)
Price incl. VAT: **7.50 Euro**
- Version with 150mm pre-assembled cables (Order.-No.: ST-4.2-150)
Price incl. VAT: **15.00 Euro**
- Version with 1 to 3 meters pre-assembled cables (Order.-No.: ST-4.2-[length in mm])
Price incl. VAT: **15,00 Euro plus 5 Euro per meter cable**

Connector for LSU4.9:



Included in delivery:

- Matching connector for Bosch Wideband Lambdaprobe type LSU4.9
- Housing, contacts and single cable sealing
- For cable width 1.0mm² (AWG 16)
- Delivery with or without pre-assembled cables (cable color matching for Lambdaprobe)

Versions:

- Version without pre-assembled cables (Order.-No.: ST-4.9-O)
Price incl. VAT: **7.50 Euro**
- Version with 150mm pre-assembled cables (Order.-No.: ST-4.9-150)
Price incl. VAT: **15.00 Euro**
- Version with 1 to 3 meters pre-assembled cables (Order.-No.: ST-4.9-[length in mm])
Price incl. VAT: **15,00 Euro plus 5 Euro per meter cable**

Welding thread for Lambdaprobes



Included in delivery:

- Matching welding thread for Lambdaprobes of type LSU4.2 and LSU4.9
- With thread, screw plug and sealing
- Thread and plug: Stainless Steel
Sealing ring: Copper or Aluminum

Order-No.: Gewinde (Thread)

Price incl. VAT: **9.00 Euro**

Sebastian Knödler Technologie, Rosenstraße 25, D-71549 Auenwald
info@breitband-lambda.de
Tel.: +49 (0)7191 - 933 97 91 / Fax: +49 (0)7191 - 933 97 92

Mounting rail adapter (DIN rail adapter)



Included in delivery:

- Matching mounting rail adapter for all Lambda-Messwandler 24 Volt
- For mounting of a 24V Messwandler on a standard mounting rail (DIN rail / C-Section)
- With mounting parts

Order-No.: Adapter

Price incl. VAT: **15.00 Euro**

Bank: Kreissparkasse Waiblingen **BLZ:** 602 500 10 **Konto:** 100 118 3482
BIC: SOLADES1WBN **IBAN:** DE40602500101001183482
VAT-ID: DE 285920322 **WEEE:** DE 97471003

Ordering and shipping

To place your order, write an email to:

info@breitband-lambda.de

Please don't forget to include your billing and shipping address!

Shipping takes place 2-3 days after receiving the order. If a part is not in stock, you will be informed immediately.

Shipping costs

- Germany: 6.00 Euro
- EU: 15.00 Euro
- Swiss (w/o insurance): 18.00 Euro
- Worldwide: On request

All orders are shipped by DPD or alternatively by DHL. We will provide a tracking number for your order after shipping.

Payment

Germany:

- Payment in advance
- PayPal (plus 2% fees)
- Payment by invoice (payable immediately without discount)

Others:

- Payment in advance
- PayPal (plus 4% fees)

Bank: Kreissparkasse Waiblingen **BLZ:** 602 500 10 **Konto:** 100 118 3482
BIC: SOLADES1WBN **IBAN:** DE40602500101001183482
VAT-ID: DE 285920322 **WEEE:** DE 97471003